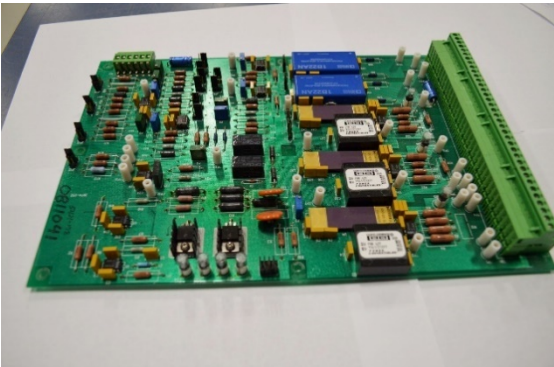


Woodward Governor Digital Modules, Valves, Actuators and Miscellaneous Parts

Features

- Support all Woodward governor platforms and DCS Systems, including Excel 150, Excel 250, 501, 505, 505E, 505H, 509, 511, 517, 527, 537, 700H, 723, 723+, 723H, NetCon, MicroNet and Atlas
- Support for associated systems and components, including the hydraulic systems



Overview

Emerson has the largest inventory and availability of Woodward governor parts in the world for hydro, gas, and steam turbines and for diesel and gas engines. We have an extended variety of new, surplus, and used/recertified Woodward governor digital modules and miscellaneous parts/assemblies available. The chart that follows is a partial inventory list.

Emerson can also repair most items below. Expedited repair services are available.

Woodward Governor Digital Modules & Miscellaneous Parts	
Part Number	Description
5464-481	Master CPU
5464-482	Woodward Board/Module
5464-485	Module Master CPU
5464-499	NetCon 5000A Master CPU 1.2
5464-500	NetCon 5000A Master CPU 1.2
5464-534	CPU Op Sys 5.01 Module
5464-536	DCS Ver.6.0 CPU Opsys Mod
5464-538	DCS Ver.6.0 SIO Opsys Module
5464-541	NetCon FTIO Module
5464-542	DCS Memory Module
5464-543	NetCon Dual Overspeed Mod
5464-544	4 Channel Act 0-200mA Module
5464-545	4 Channel Act 0-25MA Module
5464-546	1,2 0-200mA 3,4 0-25mA Mod.
5464-547	NetCon FTIO Ver 2.02-1
5464-548	Integrating Act Driver
5464-549	Integrating Act Driver
5464-550	2 Channel Actuator Driver Mod
5464-551	Integrating Act Driver
5464-552	Integrating Act Driver
5464-553	Integrating Act Driver
5464-554	2 Channel Actuator Driver Mod
5464-555	2 Channel Actuator Driver Mod
5464-556	2 Channel Actuator Driver Mod
5464-564	Michigan Gas Master CPU
5464-572	Master CPU Creole
5464-575	Speed Sensor Module
5464-576	Speed Sensor Module
5464-579	Ethernet VME2, AUI U3 Module
5464-585	Ethernet Module

Woodward Governor Digital Modules & Miscellaneous Parts	
Part Number	Description
5464-595	CPU Module
5464-596	Woodward Board/Module
5464-615	CPU Module
5464-616	CPU Module
5464-625	CPU Module
5464-632	CPU Module
5464-633	CPU Module
5464-640	NetCon Non-Vol Memory Mod
5464-642	NetCon 5000A SIO
5464-643	Discrete Input (48 Channels)
5464-644	Integrating Act Driver
5464-645	2 Channel Actuator Driver
5464-646	2 Channel Actuator Driver
5464-647	2 Channel Actuator Driver
5464-648	Analog 8 Channel 4-20MA Out
5464-649	Analog 8 Channel 0-1MA Out
5464-650	Analog 8 Channel 0-5V Out
5464-652	Analog 8 Channel 0-10V Out
5464-653	32 Channel Discrete Out
5464-654	64 Channel Discrete Out
5464-655	4 Channel Actuator
5464-656	4 Channel Act 4-20mA
5464-657	4 Channel Actuator
5464-658	Digital Speed Sensor (4 Chan)
5464-659	Digital Speed Sensor
5464-660	ISO 4-20mA Derivative Module
5464-661	Position Controller
5464-669	CLC Iso Power Module
5464-673	NetCon I/O Controller
5464-674	SIO Ver 7.1 Module

Woodward Governor Digital Modules & Miscellaneous Parts	
Part Number	Description
5464-676	Transceiver Module
5464-679	NetCon 5000 CPU 40MHZ
5464-681	NetCon FTIO
5464-688	LinkNet Controller Module
5464-689	Woodward Board/Module
5464-690	4 Channel Analog Output Mod
5464-691	8 Channel ISO T/C Fail Low
5464-692	8 Channel ISO T/C Fail Hi
5464-693	NetCon A 8 Channel ISO T/C
5464-696	NetCon FTIO
5464-697	NetCon CPU 40MHZ w/ Fsh
5464-710	CPU Module
5464-715	CPU Module
5464-716	SIO Card (Version 4.6)
5464-717	Master CPU
5464-720	New Enhanced 511 CPU
5464-724	FTM, MPU/4 Channel AC
5464-725	use 5437-523
5464-726	use 5437-524
5464-727	use 5437-419 or 5437-687
5464-728	FTM, AO/2 Channel Act.
5464-745	CPU Module
5464-747	CLC Dspd IN2 (4MR)
5464-748	CLC Dspd IN3 (3MR/1MPU)
5464-749	CPU Module
5464-752	Non-Volatile Memory
5464-756	NetCon NV Memory 4M
5464-760	505 DSG Dual Out Cont V2.02
5464-762	505 Extr Control V2.02
5464-768	DCS II CPU Module